



Implenia

VDEI

EÜ LUDWIGSLUST

**PROJEKT-
VORSTELLUNG**

Frank Reinecke

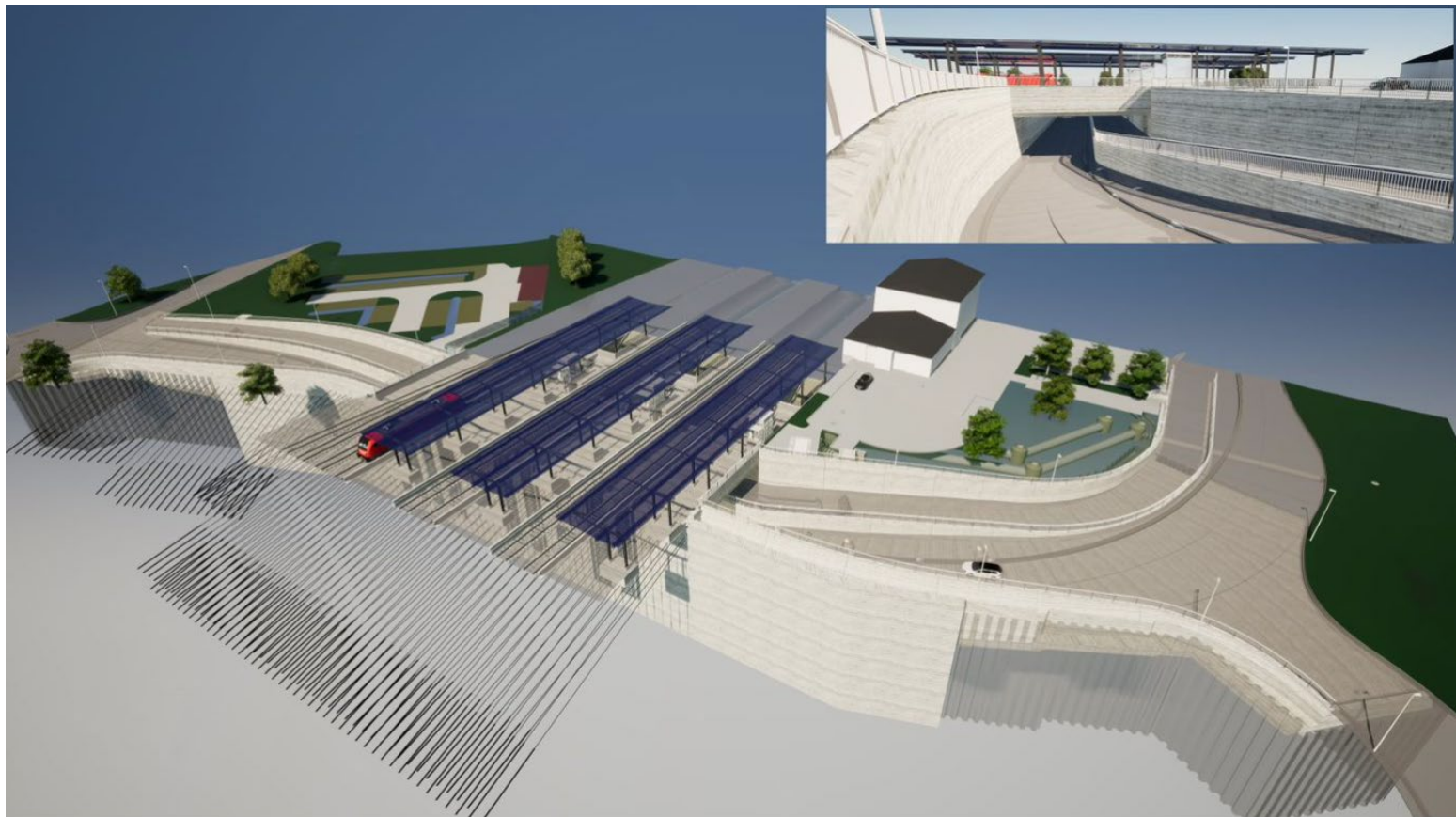
11. November 2023



LUFTBILD

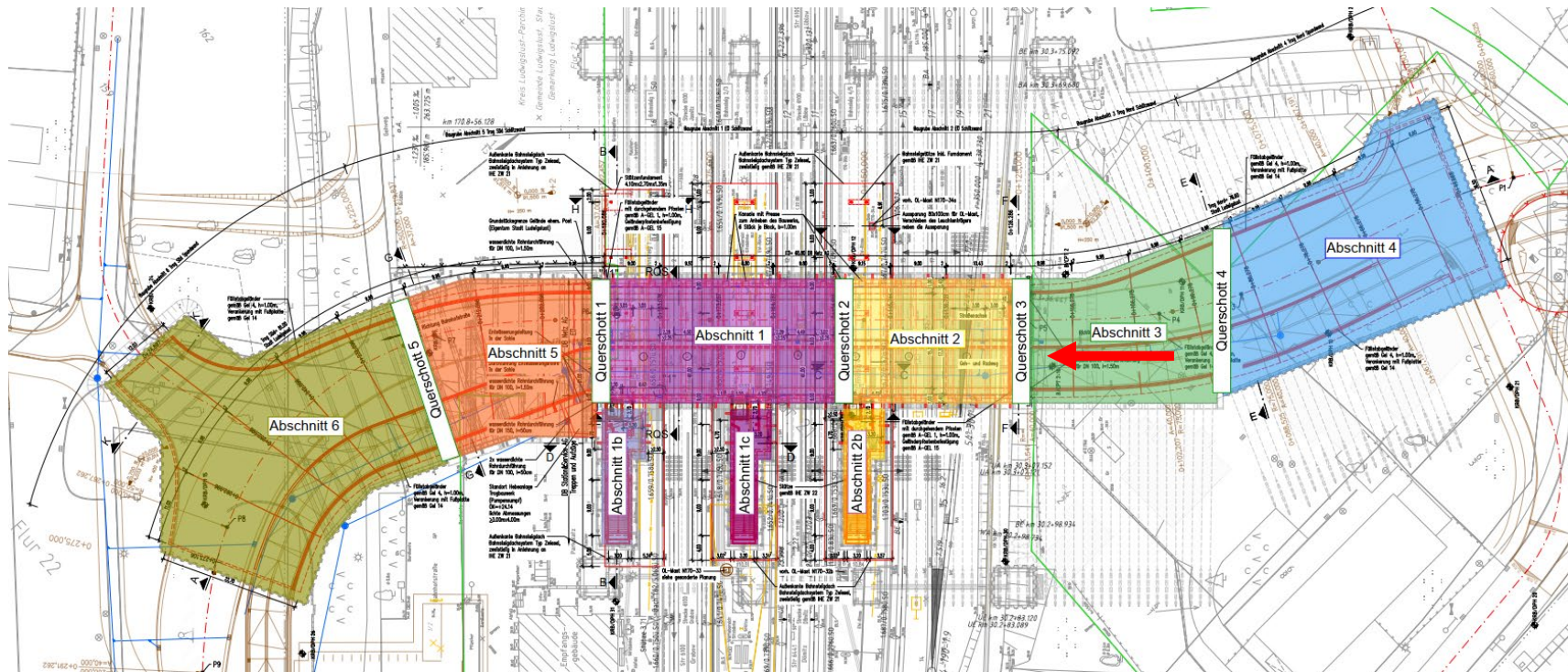


VISUALISIERUNG



EÜ LUDWIGSLUST PROJEKTVORSTELLUNG

BAUGRUBENABSCHNITTE



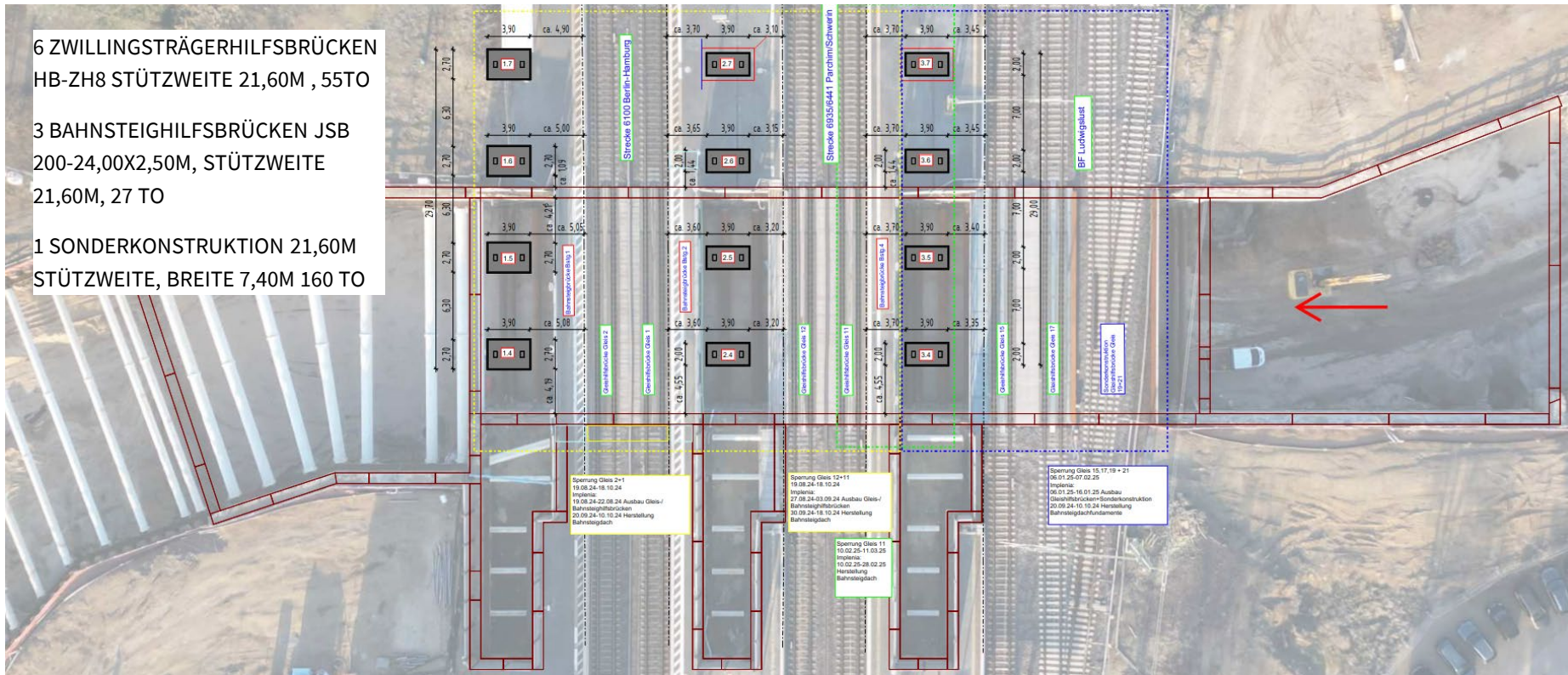
EÜ LUDWIGSLUST PROJEKT VORSTELLUNG

BAHNSTEIG-/GLEISLAGEN

6 ZWILLINGSTRÄGERHILFSBRÜCKEN
HB-ZH8 STÜTZWEITE 21,60M , 55TO

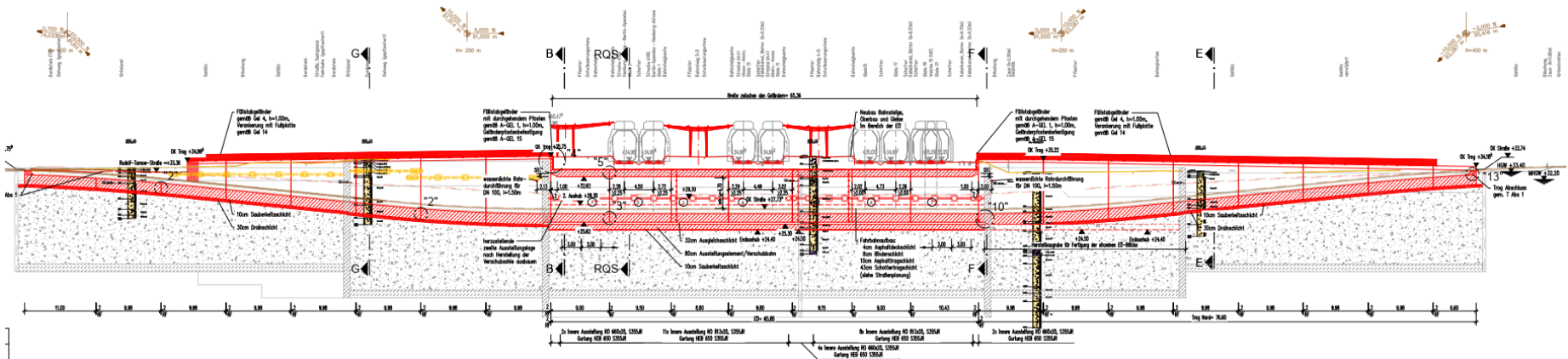
3 BAHNSTEIGHILFSBRÜCKEN JSB
200-24,00X2,50M, STÜTZWEITE
21,60M, 27 TO

1 SONDERKONSTRUKTION 21,60M
STÜTZWEITE, BREITE 7,40M 160 TO



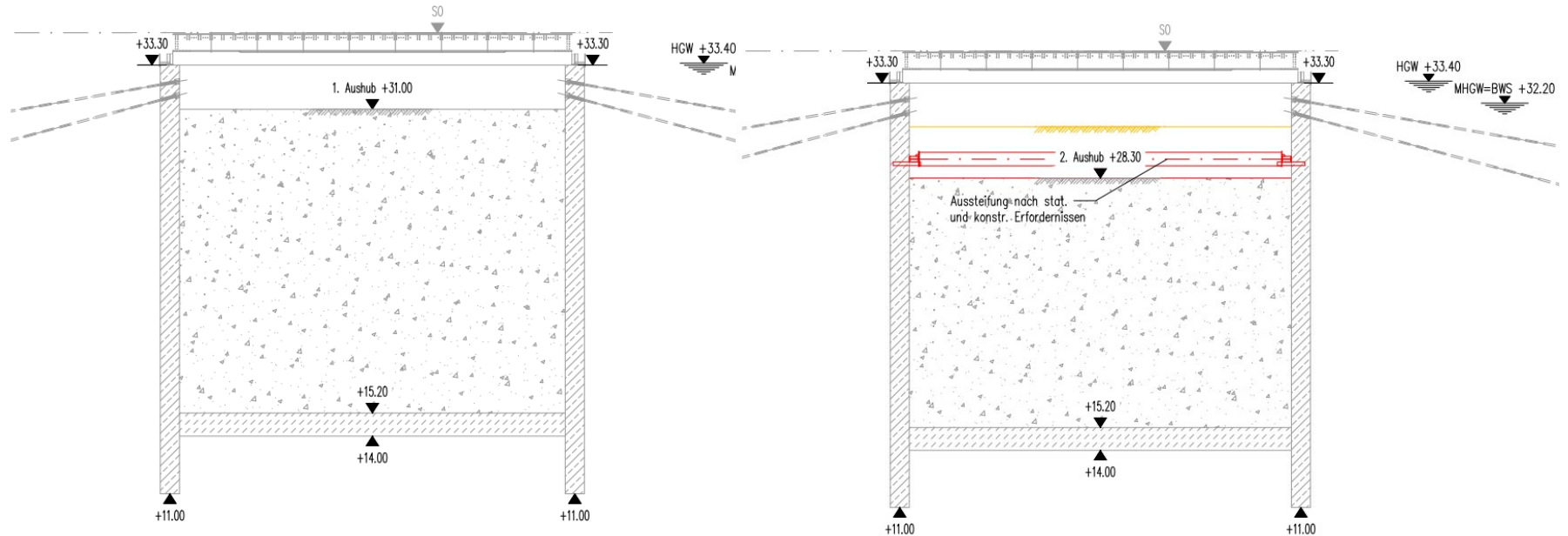
EÜ LUDWIGSLUST PROJEKTVORSTELLUNG

LÄNGSSCHNITT

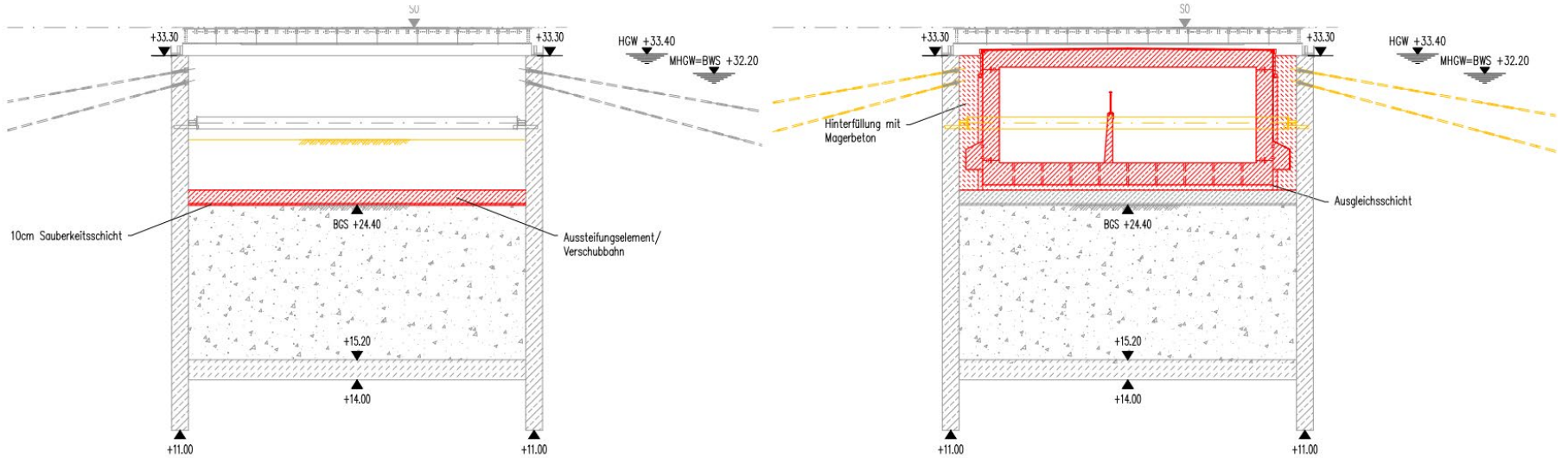


EÜ LUDWIGSLUST PROJEKTVORSTELLUNG

QUERSCHNITT BAUGRUBEN



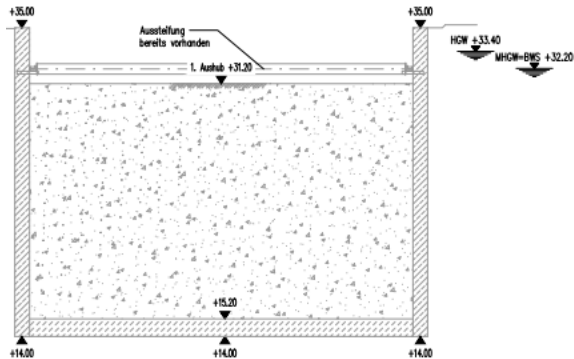
QUERSCHNITT BAUGRUBEN



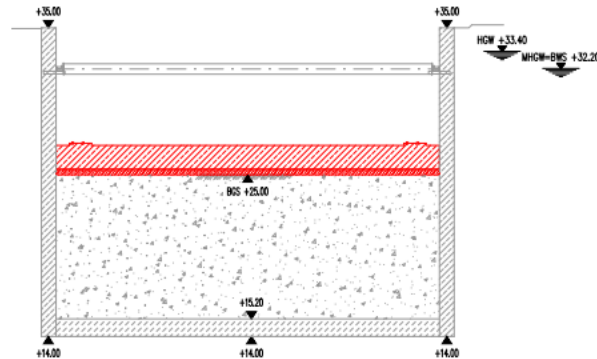
EÜ LUDWIGSLUST PROJEKTVORSTELLUNG

QUERSCHNITT BAUGRUBEN

Ausgangssituation M 1:200
Baugrubenabschnitt 5

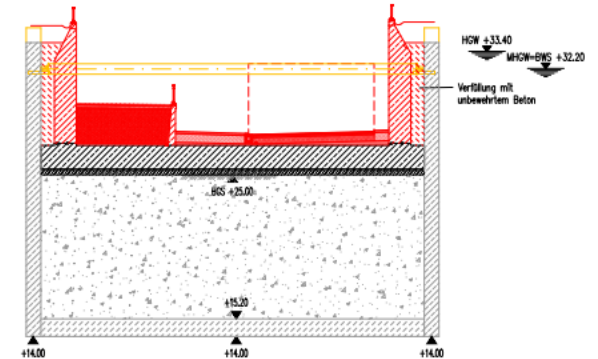


Bauphase 1 M 1:200
1.1 Erdaushub bis BGS
1.2 Herstellung Sohle Rohbau Trog

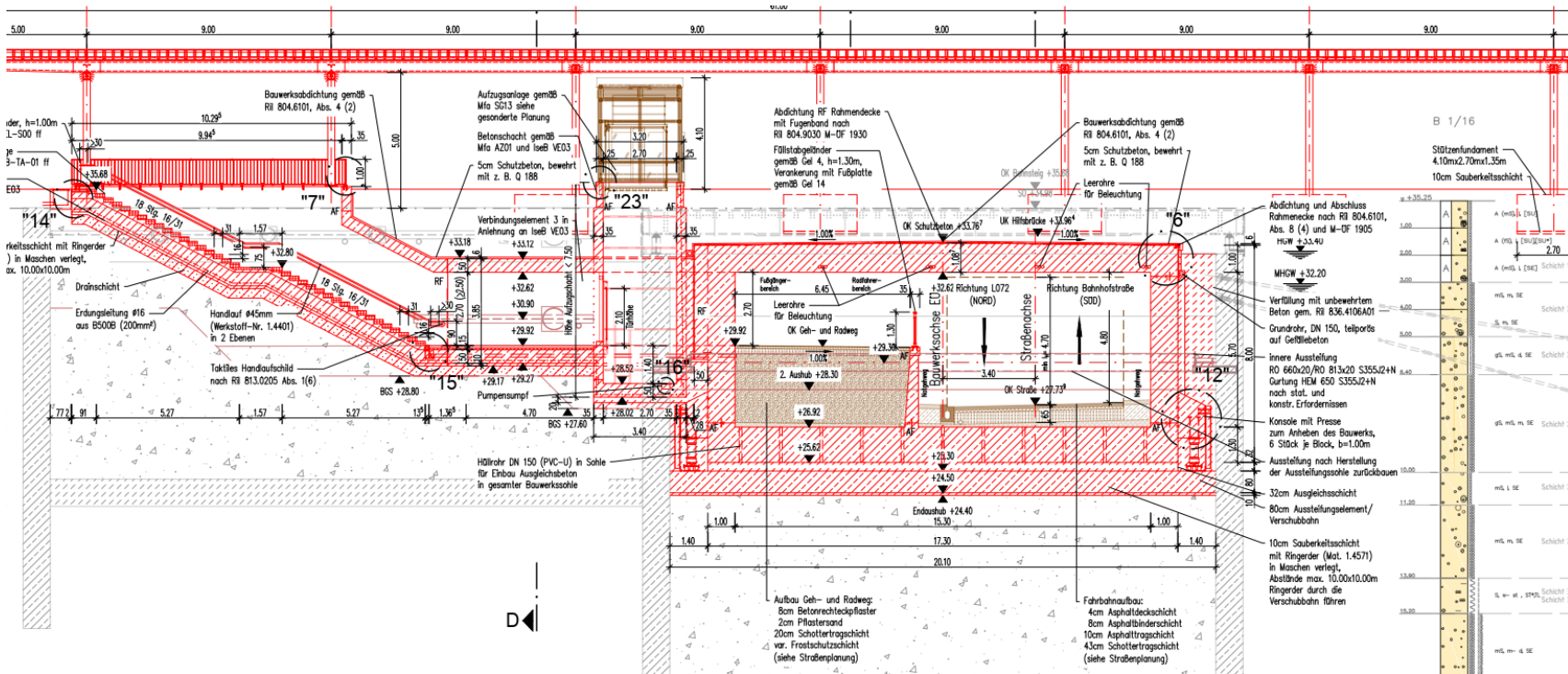


Bauphase 2 M 1:200

- 2.1 Rückbau der Aussteifungslage (nach Aushärtung der Trogsohle)
- 2.2 Herstellung Wände Rohbau Trog
- 2.3 Abschnittsweise Verfüllung zwischen Trogwand und Stahlbetonschlitzwand
- 2.4 Wiederherstellung Gelände, Ausstattung Trog, Teilabbruch Stahlbetonschlitzwand
- 2.5 Verkehrsfreigabe



QUERSCHNITT EÜ RAHMEN MIT BAHNSTEIGZUGANG









JANSON RIGGING

JANSON RIGGING

57











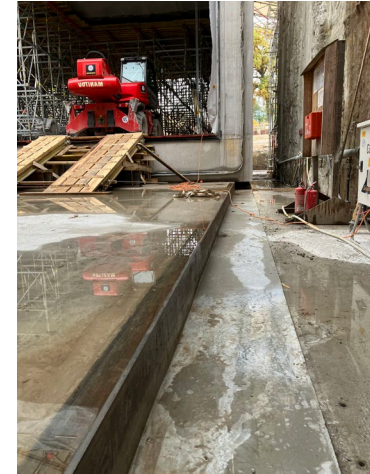
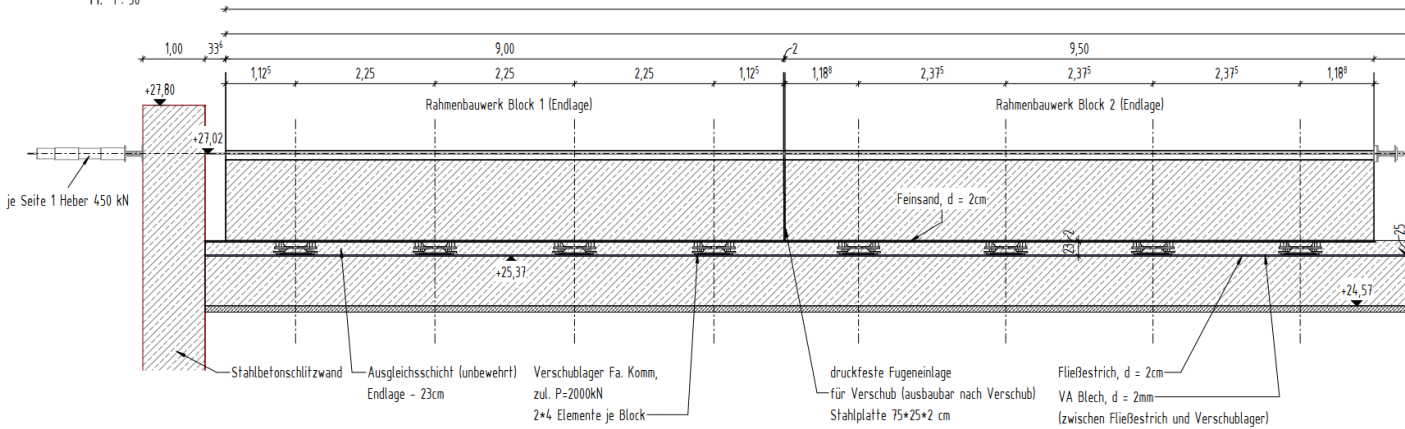
Soil
29.15

EV 63

29.15
29.15

Längsschnitt Verschub

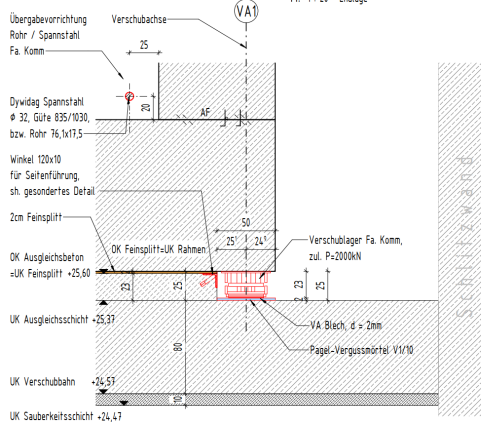
M. 1 : 50



VERSCHUBSTRECKE 70M, GEWICHT 2500T

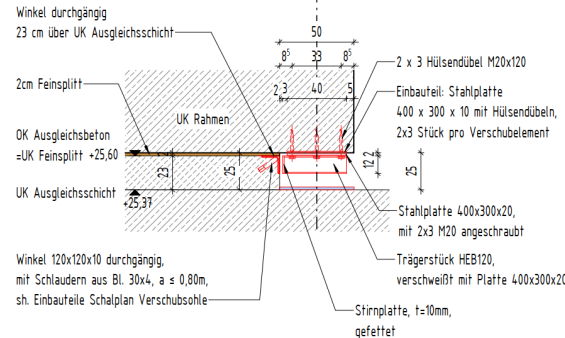
Detail '1'

M. 1 : 20 Endlage



Detail Seitenführung

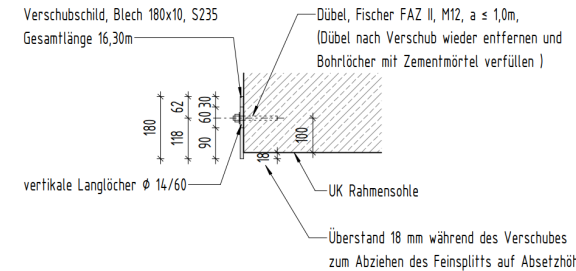
M. 1 : 20



Verschubschild

M. 1 : 10

- am Block 1 und Block 6 -





BAUZEIT 10/22-03/25

26.000 M3 BAUGRUBENAUSHUB

1.350 M3 ABRUCH

255 TO STAHL BAUGRUBENAUSSTEIFUNG

23.500 M3 BETON

4.300 TO BEWEHRUNG




Implenia

06.11.2023



Implenia



VIELEN DANK

LEGAL NOTICE

DISCLAIMER

This presentation, material, any associated oral presentation and/or discussion (hereafter together, the "**MATERIAL**") has been prepared by Implenla Ltd and/or its affiliates (hereafter "**IMPLENIA**") for informational purposes only and may contain confidential and/or legally protected information. The MATERIAL may include forward-looking information and statements, including statements concerning the outlook for IMPLENIA'S businesses. These statements are based on current expectations, estimates and projections about the factors that may affect IMPLENIA'S future performance, including global economic conditions and the economic conditions of the regions and industries that are major markets for IMPLENIA. These expectations, estimates and projections are generally identifiable by statements containing words such as "expects", "believes", "estimates", "targets", "plans", "outlook", or similar expressions.

Numerous risks and uncertainties, many of which are beyond IMPLENIA'S control, could cause IMPLENIA'S actual results to differ materially from the forward-looking information and statements made in this MATERIAL, and could affect IMPLENIA'S ability to achieve any or all of its stated targets. The information and opinions contained in this MATERIAL do not purport to be comprehensive, are provided as of the date of this MATERIAL or as of the date specified herein and are subject to change without notice.

Although IMPLENIA believes that the expectations reflected in all such forward-looking statements are based upon reasonable assumptions, it can give no assurance that these expectations will be achieved. IMPLENIA also disclaims any obligation to update these forward-looking statements to reflect future events or developments.

This MATERIAL is not an offer to sell or a solicitation of offers to purchase or subscribe for shares of Implenla Ltd. This MATERIAL is (i) not a prospectus within the meaning of article 652a of the Swiss Code of Obligations, (ii) not a listing prospectus as defined in articles 27 et seqq. of the listing rules of the SIX Swiss Exchange Ltd or of any other stock exchange or regulated trading venue in Switzerland, (iii) not a prospectus within the meaning of the Swiss Financial Services Act and (iv) not a prospectus under any other applicable laws.

This MATERIAL does not constitute an offer to sell, or a solicitation of an offer to purchase, shares in Implenla Ltd. or any other securities in the United States.

This MATERIAL is not for publication, transmission or distribution, directly or indirectly, into the United States or its territories or possessions or to persons in the United States (within the meaning of Regulation S under the U.S. Securities Act of 1933, as amended (the "Securities Act")) and are only addressed to and directed at persons outside the United States, as defined in Regulation S under the Securities Act. This MATERIAL does not constitute an "offer of securities to the public" within the meaning of the Prospectus Regulation (EU) 2017/1129 of the European Union and is not a public offering in the United Kingdom. The information contained herein shall not constitute an offer to sell or the solicitation of an offer to buy, in any jurisdiction in which such offer or solicitation would be unlawful prior to registration, exemption from registration or qualification under the securities laws of any jurisdiction. Neither this MATERIAL nor any part or copy of it nor the information contained in it and any related materials may be taken or transmitted into the United States or any jurisdiction which prohibits the same or distributed or redistributed, directly or indirectly, in the United States or any jurisdiction which prohibits the same or to any resident thereof.

All of the information and material used in this MATERIAL, including text, images, logos and product names, is either the property of IMPLENIA, or is used by IMPLENIA with permission.

Whilst IMPLENIA uses all reasonable attempts to ensure the accuracy and completeness of all contents, IMPLENIA gives no warranties or representations of any kind that material in this MATERIAL is complete, accurate, reliable or timely, or that it does not infringe third-party rights. IMPLENIA does not accept any liability for any direct, indirect or consequential loss and/or damage arising from reliance on this MATERIAL.

The contents of this MATERIAL may not be reproduced, modified or copied, or used for any commercial purposes, or communicated to any third parties without written consent from IMPLENIA. All trademarks mentioned are legally protected.

Copyright © 2021 Implenla Ltd and/or its affiliates. All rights reserved.

By attending this presentation and/or by accepting this MATERIAL you will be taken to have represented that you agree to accept the terms set out above.